

It Takes a Village: And Other Lessons Learned from a Large Comprehensive Stroke Center

*Sandi Shaw RN, BSN
Stroke Program Manager
Memorial Hermann Hospital – TMC
Mischer Neuroscience Institute*

Disclosure Statement

I do not have relevant financial relationships with commercial interests related to the content of this presentation.

Memorial Hermann Acute Care Hospitals & Life Flight

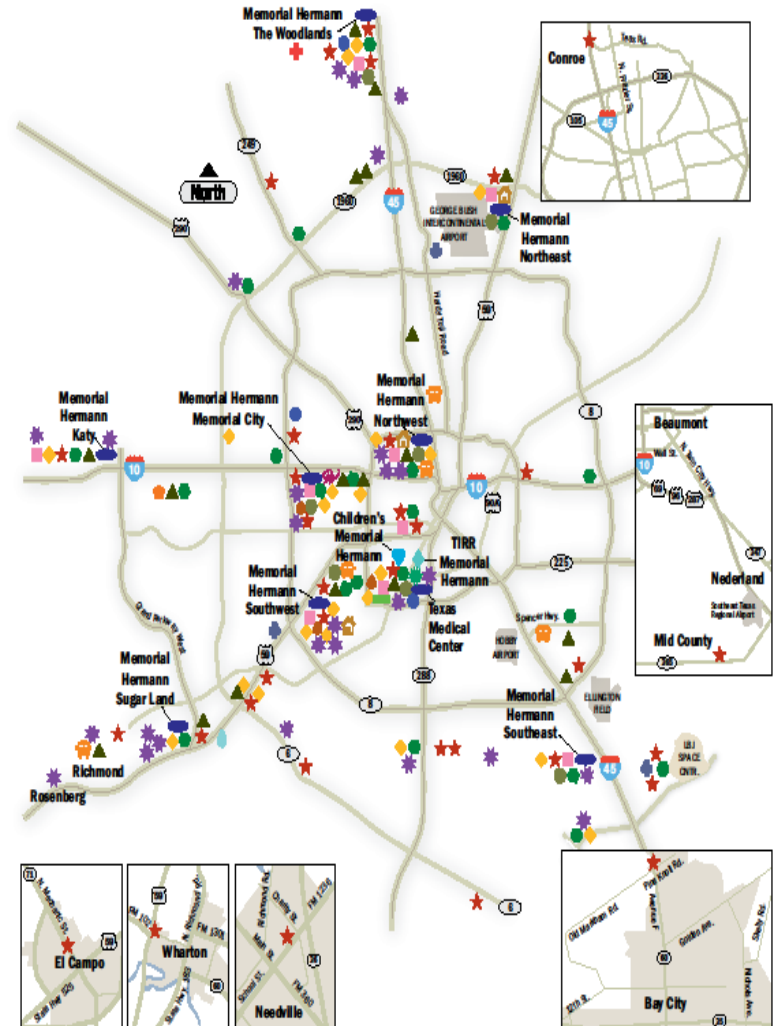
The largest not-for-profit health system in Southeast Texas, Memorial Hermann has 15 hospitals and several specialty programs and services conveniently located throughout the Greater Houston area. Memorial Hermann-Texas Medical Center is one of the nation's busiest Level I Trauma centers and the primary teaching hospital for the UT Health Medical School.



Memorial Hermann Healthcare System

Geographic Coverage

Approximately 82% of the Expanded Greater Houston MSA population lives within the primary service area of at least one Memorial Hermann campus.



Memorial Hermann-TMC

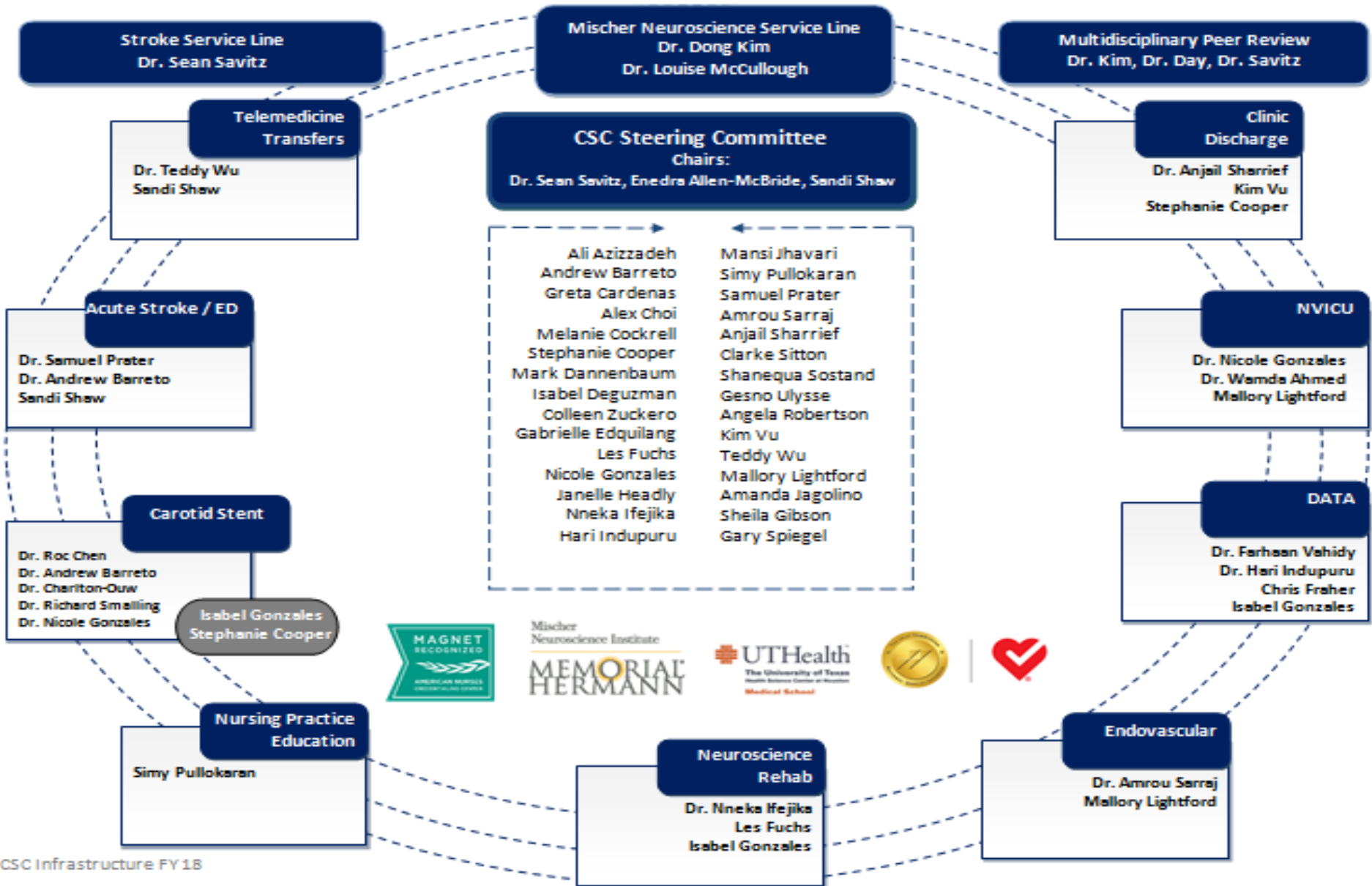
- 1,082 Licensed Beds
- 7 Specialty Adult ICUs (CCU, CVS, Medicine, Neurosciences, Trauma, Transplant, Pediatric, Burn)
- TJC CSC Certification March 2013
- 39,196 Discharges FY16
- 268,269 Patient Days
- 72,403 ED Visits
 - 16,618 ED Admissions to Acute Care
- 31,769 Inpatient and Outpatient Surgeries
- 2,200 Stroke admissions

Mischer Neuroscience Institute

Neuroscience Service Line

- 32 Neuro ICU Beds
- 12 Stroke Unit Beds
- 15 Neuro IMU Beds
- 51 Neuro Acute Care Beds
- 7 Epilepsy Monitored Beds
- 10 Neurosurgical Elective Unit Beds
- 6 Neuro-elective ICU Beds

Building the Village



The Village: Stroke Coordinators

- How many is enough?
- Build on expertise
- Build out of comfort zone
- Gap analysis to help direct work effort and eliminate duplication
- Capture ALL Strokes and Carotids – including weekends and holidays



The Village: Data Management Team

- How many is enough?
- Building a Registry
- Gap analysis to help direct work effort and eliminate duplication
- Collaboration with ALL Village members



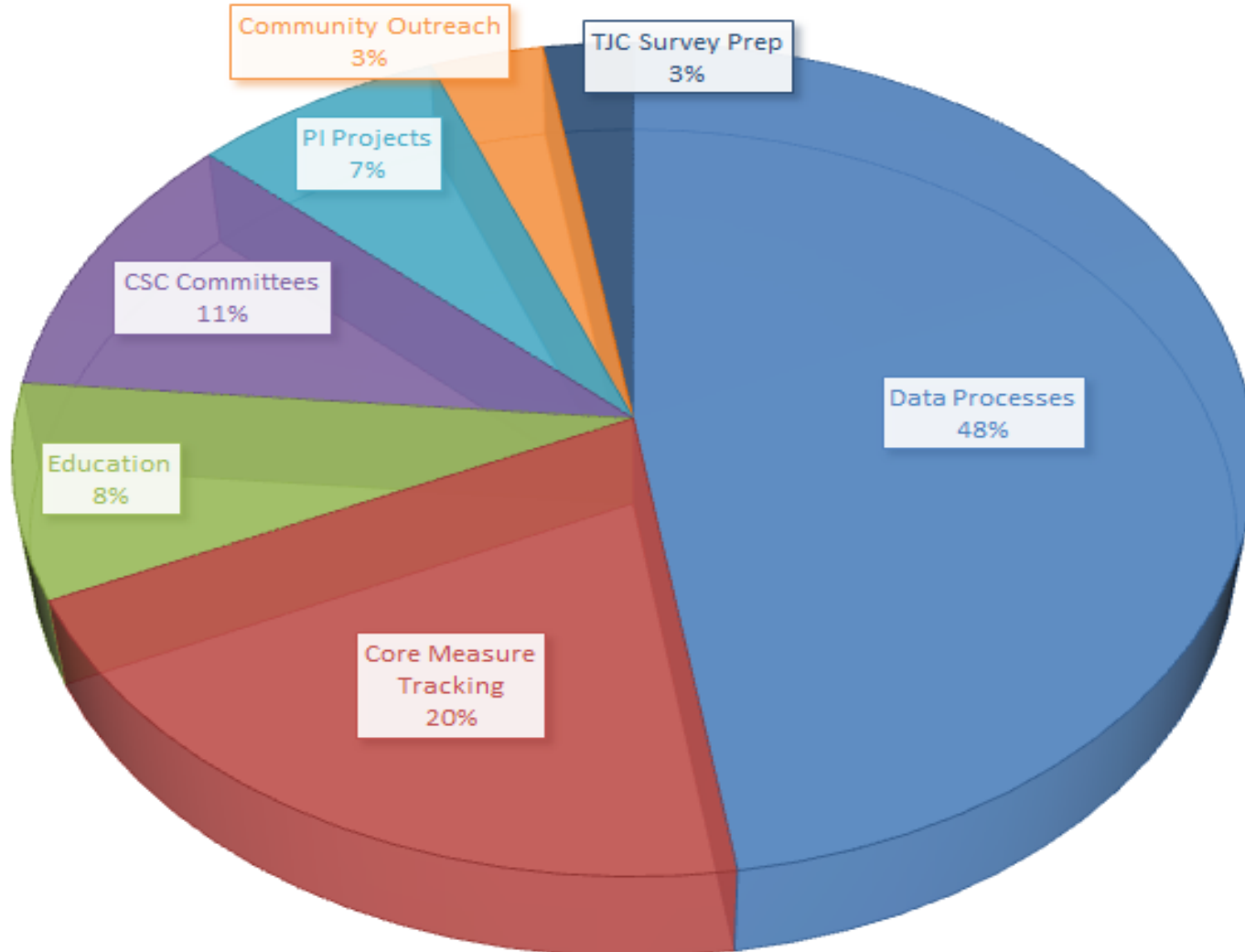
The Village: Projects

Table 1: Distribution of Person-Hours per Day (PHDs) based on activity category and frequency for a high volume comprehensive stroke center

	Daily*	Weekly	Biweekly	Monthly	Quarterly	Semi-Annual	Annual	Total	FTE/Category
Data Processes	29			2.4			0.673	32.07	4.01
Core Measure Tracking	13.80							13.80	1.73
Education	4	0.40		1.05	0.183			5.63	0.70
CSC Committees	0.08	2.60	0.6	3.825				7.11	0.89
PI Projects		4.40		0.45	0.033			4.88	0.61
Community Outreach		1.60		0.2	0.4			2.2	0.28
TJC Survey Prep				1.6		0.13		1.73	0.22
Total	46.88	9	0.6	9.525	0.616	0.13	0.673	67.43	8.44
FTE / Frequency	5.86	1.13	0.08	1.19	0.08	0.02	0.08	8.43	

*includes weekend coverage

The Village: Projects in Motion



The Village: Pre CSC



The Village: Post CSC



Thank You

 **UTHealth**[®] | McGovern
The University of Texas | Medical School
Health Science Center at Houston

MEMORIAL[®]
HERMANN
Texas Medical Center