

TRED – HF Commentary

***Jane E. Wilcox MD, MSCI**
Northwestern University, Chicago IL, USA*



SCIENTIFIC 20
SESSIONS 18

Withdrawal of Guideline Directed Medical HF Therapy

- **Pilot Study**, Randomized → Single Crossover
- Stepwise fashion over 16 weeks
- **‘Recovery’** defined as:
 - LVEF >50%, NT pro-BNP <250ng/L, NYHA class I symptoms
- **Recrudescence HF in 44% within just 8 weeks**
 - Drop in LVEF of 10% to <50%, LVEDV >10%, 2x increase NT-proBNP, clinical HF symptoms



KEY QUESTIONS

Mechanisms of Improvement?

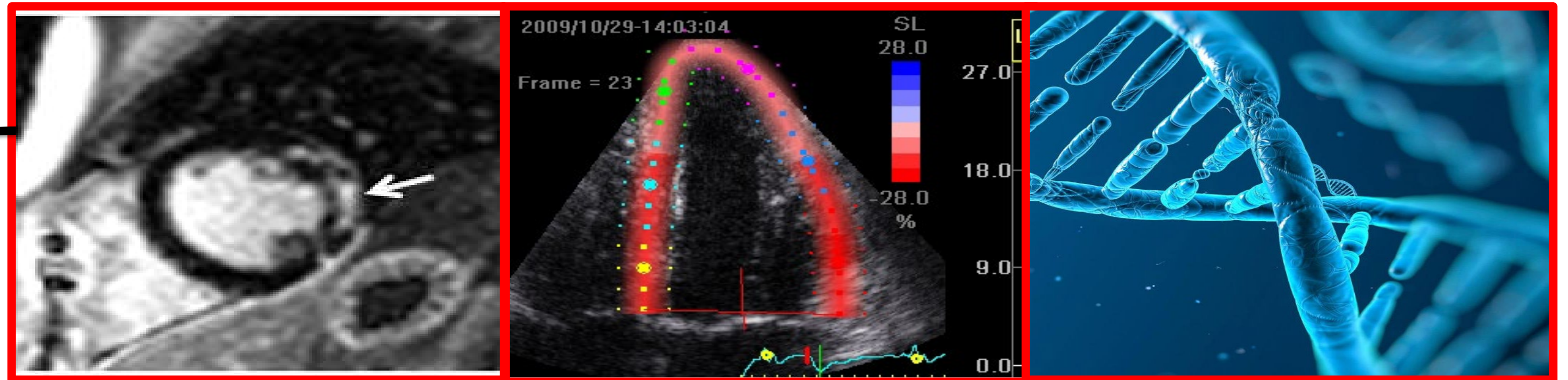


**Biomarkers?
Clinical profiles?**



**~12% patients on
Loop Diuretics**

**Assessment of
Myocardial
Substrate?**



***Global Radial Strain
Standardized MR Strain methods***

20% TTNtv

Clinical Implications... 'TRED-lightly'

- **Pilot Study**
- **Recovery vs. Remission?**
 - Indefinite evidence based medical therapy ***without*** interruption
- The ***FUTURE of myocardial recovery*** should include
 - Broader –OMICS
 - Rigorously standardized measures of cardiac mechanics



THANK YOU



SCIENTIFIC 20
SESSIONS 18