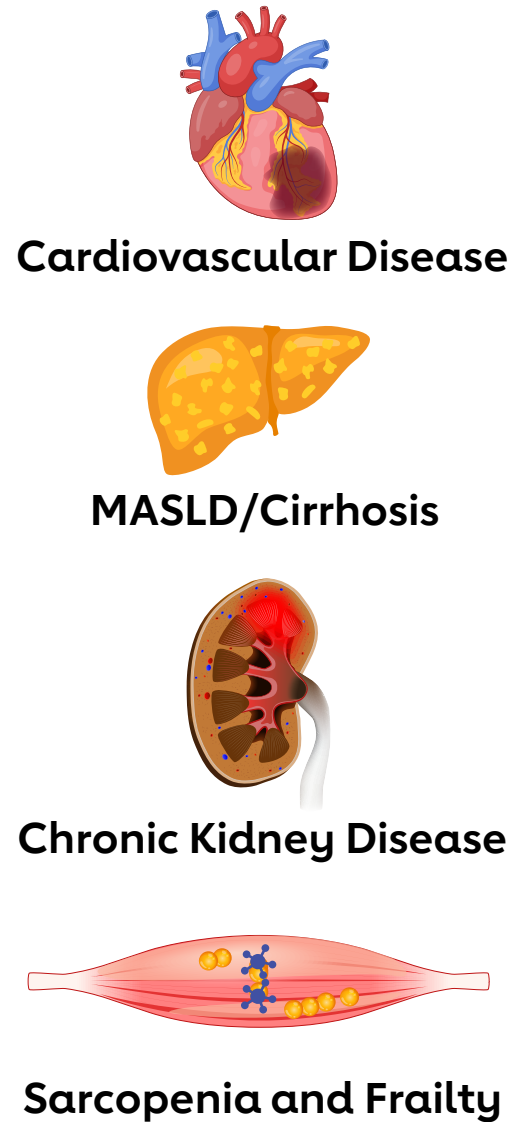
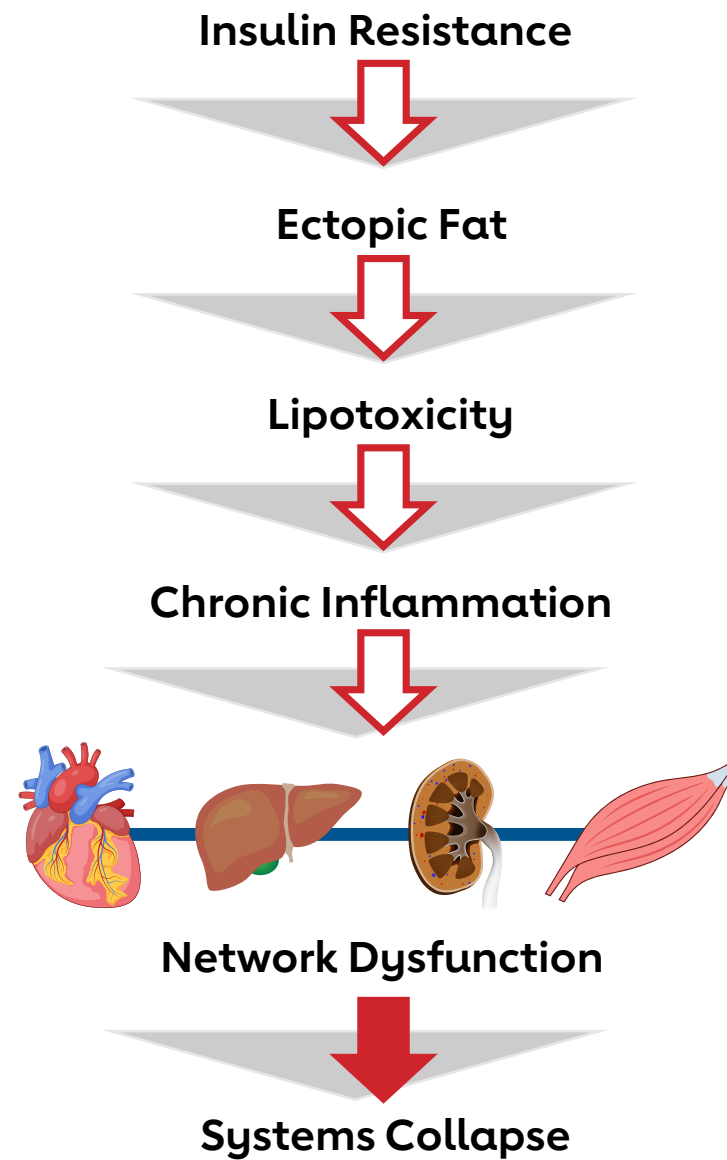


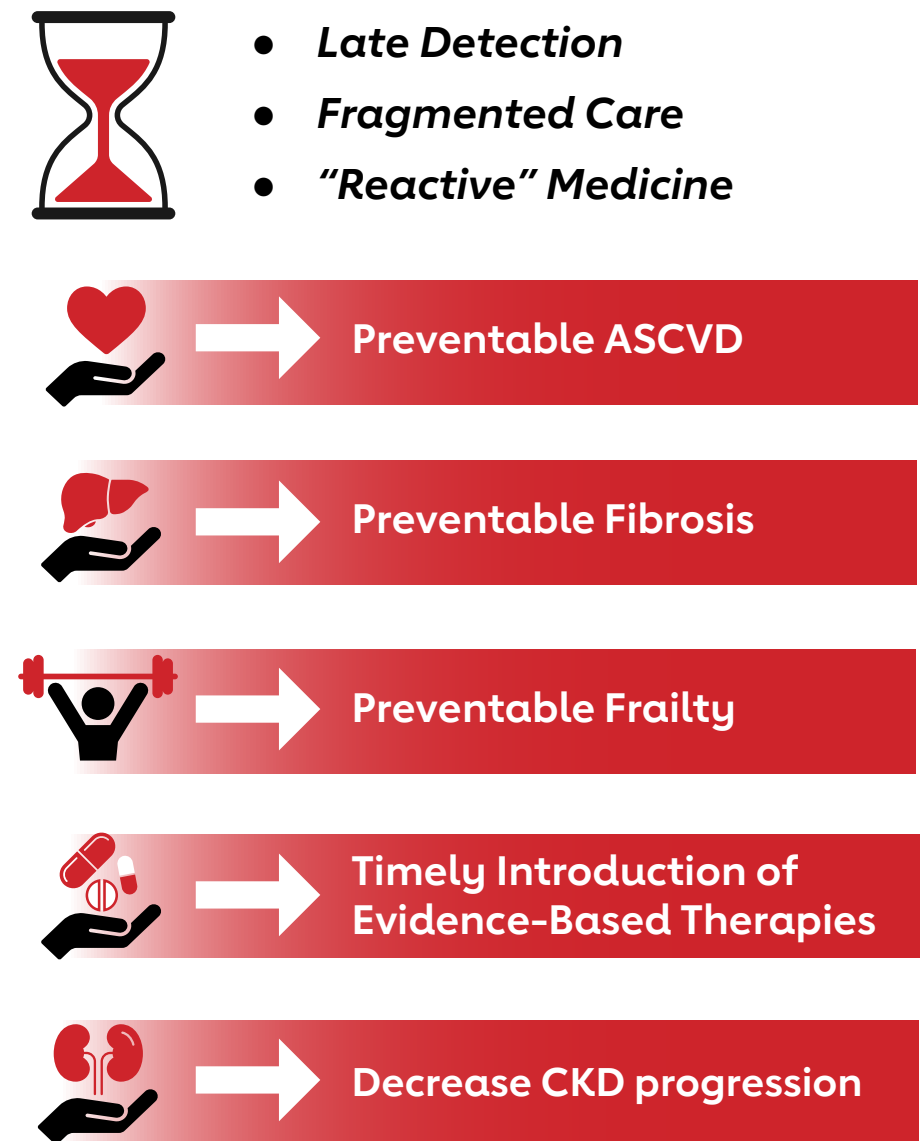
## Leading Causes of Metabolic Morbidity and Mortality<sup>1,2</sup>



## Shared Pathobiology<sup>3</sup>



## Under Recognition<sup>4</sup>



## Early Metabolic Risk Recognition



## PREVENTION IS KEY<sup>3</sup>



## Improved Lifespan and Healthspan



### References:

- Martin SS, Aday AW, Allen NB, et al. 2025 Heart Disease and Stroke Statistics: A Report of the US and Global Data from the American Heart Association. *Circulation*; 151:8 <https://doi.org/10.1161/CIR.0000000000001303>
- Huber Y, Hofman L, Prochaska JH, et al. Incidence of major cardiovascular events in patients with metabolic dysfunction-associated steatotic liver disease in the general population. *Eur J Heart Failure* (2025) 27; 2490-2500. doi:10.1002/ejhf.70053
- Shafiq A, Rashid AM, Shah SR, et al. MASLD and cardiovascular disease: a state-of-the-art review. *Global Cardiology* 2026; 4:1-8. DOI: 10.4081/cardio.2026.94
- Cusi K, Abdelmalek MF, Apovian CM, et al. Metabolic Dysfunction-Associated Steatotic Liver Disease (MASLD) in People With Diabetes: The Need for Screening and Early Intervention. A Consensus Report of the American Diabetes Association. *Diabetes Care* 2025;48:1057-1082 | <https://doi.org/10.2337/dci24-0094>