



# **American Heart Association**

## **RESEARCH FUNDING OPPORTUNITIES**

January 17, 2023

[apply@heart.org](mailto:apply@heart.org)



# PROFESSIONAL HEART DAILY



American Heart Association

Professional Heart Daily

Get Involved ▾ Jobs & Career Resources Tools & Resources ▾

ex: Heart Attack Q | Login ▾

Communities ▾ Guidelines & Statements ▾ Journals Meetings ▾ Education ▾ Members / Councils ▾ Research Programs ▾

Become a Member

Home / Research Programs

## Research Programs

Since 1949, the AHA has invested \$4.9 billion in cardiovascular and cerebrovascular disease research.

AHA Precision Medicine Platform. [Learn more about the platform \(video\).](#)

Follow us on Twitter [@AHA\\_Research](#)

The official Twitter account for the Research of the American Heart Association

### Research Accomplishments

Facts, stats & historical highlights of AHA research funding

[Go to page](#) ▸

### Research Insider

Sign Up for e-newsletter alerts about upcoming funding news and related opportunities.

[Research Insider Sign Up](#) ▸

### 2022 AHA Holidays

AHA offices will be closed on the following days. Inquiries will be answered as quickly as possible upon reopening.

Jan. 17	Sept. 5
May 27 - 30	Nov. 24 & 25
July 1 & 5	Dec. 26 - Jan. 2

## RESEARCH

[professional.heart.org/research](https://professional.heart.org/research)



### AHA RESEARCH INSIDER: JANUARY 2022 EDITION

Important information for AHA Awardseekers, Applicants, Peer Reviewers, and Fiscal & Grant Officers

## FUNDING NEWS & UPDATES

### AHA to Award \$10M to Research on Mechanisms Underlying Cardiovascular Consequences Associated with COVID-19 and Long COVID

Submit your proposal by Tuesday, February 1, 2022, at 3 pm Central Time

Informational Webinars with Q&A:

Thurs., Jan. 13, 2022 – 12-12:30 pm Central

<https://heart.zoom.us/j/86921276511?pwd=Sm1sV2MwM1N4cnNZdnZlZTVlR2ZtZz09>

Meeting ID: 869 2127 6511 Passcode: 079760

Wed., Jan. 19, 2022 – 11-11:30 am Central

<https://heart.zoom.us/j/85095813544?pwd=YlBWR0wQpJBmQ0c0VlF4amE0MG5UT09>

Meeting ID: 850 9581 3544 Passcode: 844935

The AHA is accepting research proposals to better understand the mechanism(s) underlying cardiac, vascular and cerebrovascular effects of COVID-19 and Long COVID, as well as mechanisms that contribute to differential susceptibility to Long COVID.

Proposals are sought that will utilize contemporary and innovative approaches to assess tissue damage and/or dysfunction of the heart and vasculature/cerebrovascular, and/or potential associated dysregulation of various signaling pathways and systems. Proposals directed toward leveraging basic mechanistic discoveries, including identification of biomarkers, to develop therapeutic approaches for cardiovascular consequences of COVID are also of interest. Due to the heterogeneity of Long COVID, important insights into key mechanistic underpinnings and potential treatment strategies are most likely to be achieved in participant populations with well-characterized phenotypes.

Because of the racial and ethnic disparities associated with COVID-19 and Long COVID, proposals should have a strong focus on inclusion of demographically diverse subject populations. Applicants proposing studies engaging individuals who have active Long COVID are encouraged to consider utilization of a patient-centered approach in designing, conducting and disseminating their studies (<https://www.pearl.org/research-results/2021/using-body-mapping-develop-patient-centered-research-agenda-about-long-covid>).

Grant amounts will be a minimum of \$500,000 and a maximum of \$1,000,000 over a three-year funding period, including up to 10 percent institutional indirect costs. The AHA anticipates funding up to \$10 million in awards.

[View the full RFA](#)



American  
Heart  
Association®

# MISSION & GOALS

## AHA Mission

To be a relentless force for a world of longer, healthier lives.

.....

## 2024 Impact Goal

Every person deserves the opportunity for a full, healthy life.

As champions for health equity, by 2024,  
the American Heart Association will advance  
cardiovascular health for all, including identifying and  
removing barriers to health care access and quality.



# RESEARCH IS THE FOUNDATION



- ✓ **Largest non-profit, non-governmental funder of cardiovascular & cerebrovascular research**
- ✓ **\$5 billion+ since 1949**
- ✓ **Currently 1,440 active projects, totaling \$461.7 million**

# \$100M TOWARD HEALTH EQUITY & STRUCTURAL RACISM RESEARCH

*Drive systemic **public health change** focused on removing barriers to equitable health for everyone, everywhere*



New research programs & grants focused on health inequities & structural racism



## Circulation

### AHA PRESIDENTIAL ADVISORY

#### Call to Action: Structural Racism as a Fundamental Driver of Health Disparities

A Presidential Advisory From the American Heart Association

**ABSTRACT:** Structural racism has been and remains a fundamental cause of persistent health disparities in the United States. The coronavirus disease 2019 (COVID-19) pandemic and the police killings of George Floyd, Breonna Taylor, and multiple others have been reminders that structural racism persists and restricts the opportunities for long, healthy lives of Black Americans and other historically disenfranchised groups. The American Heart Association has previously published statements addressing cardiovascular and cerebrovascular risk and disparities among racial and ethnic groups in the United States, but these statements have not adequately recognized structural racism as a fundamental cause of poor health and disparities in cardiovascular disease. This presidential advisory reviews the historical context, current state, and potential solutions to address structural racism in our country. Several principles emerge from our review: racism persists; racism is experienced; and the task of dismantling racism must belong to all of society. It cannot be accomplished by affected individuals alone. The path forward requires our commitment to transforming the conditions of historically marginalized communities, improving the quality of housing and neighborhood environments of these populations, advocating for policies that eliminate inequities in access to economic opportunities, quality education, and health care, and enhancing allyship among racial and ethnic groups. Future research on racism must be accelerated and should investigate the joint effects of multiple domains of racism (structural, interpersonal, cultural, anti-Black). The American Heart Association must look internally to correct its own shortcomings and advance antiracist policies and practices regarding science, public and professional education, and advocacy. With this advisory, the American Heart Association declares its unequivocal support of antiracist principles.

Keith Churchwell, MD, FAHA, Chair  
Mitchell S.V. Elkind, MD, MS, FAHA  
Regina M. Benjamin, MD, MBA  
April P. Carson, PhD, MSPH, FAHA  
Edward K. Chang, BS  
Willie Lawrence, MD, FAHA  
Andrew Mills, MPH  
Tanya M. Odom, EdM  
Carlos J. Rodriguez, MD, MPH, FAHA  
Fatima Rodriguez, MD, MPH, FAHA  
Eduardo Sanchez, MD, MPH  
Anjali Z. Sharrief, MD, MPH, FAHA  
Mario Sims, PhD, MS, FAHA  
Olajide Williams, MD, MS  
On behalf of the American Heart Association

Expand investigator diversity: Research opportunities for underrepresented racial & ethnic groups



# STRATEGICALLY FOCUSED RESEARCH TOPICS

Board-directed – past examples:

- COVID-related grants
- Health Equity Research Networks
  - Prevention of Hypertension
  - Disparities in Maternal-Infant Health Outcomes
  - Rural Health Disparities (current)
- End Nicotine Addiction in Children and Teens



Watch application information page

Sign up for monthly Research newsletter from our main web page:

[professional.heart.org/research](https://professional.heart.org/research)



# FOCUSED RESEARCH TOPICS

## Funding Partner Organizations – 2023

Research focused on

- congenital heart defects
- effects of walnut consumption on health-related outcomes
- Barth Syndrome

Early Career Researchers in

- clinical vascular science
- anesthesiology
- cerebrovascular research related to vascular neurology, stroke and neurocritical care



# Upcoming Proposal Deadlines

Program*	Pre-proposal Deadline	Proposal Deadline**	Award Start
<b><u>Assessing Race in Clinical Research Models</u></b> To take a fresh look at risk prediction models and algorithms in the field of cardiovascular and stroke science that have been adjusted for race, and <i>reevaluate</i> based on potential downstream inequities in disease outcomes and treatments. This award is targeted to predocs, postdocs, and fellows.	Monday, Jan. 23, 2023	Monday, March 6, 2023	July 1, 2023
<b><u>Migraine as a Risk Factor for Stroke and Cardiovascular Disease</u></b> To use large currently available databases (studies or electronic health record data) with information on migraine and cardiovascular disease, in combination with data science approaches, to assess migraine as a risk factor for cardiac disease and stroke.	Monday, Jan. 23, 2023	Monday, March 6, 2023	July 1, 2023
<b><u>Health Equity Research Network (HERN) on Improving Access to Care and Other Health Inequities in Rural America</u></b> This funding will support research that proposes novel solutions to meaningfully impact rural health disparities.	Thursday, Jan. 26, 2023	Tuesday, April 4, 2023	July 1, 2023



# Upcoming Proposal Deadlines

Program*	Pre-proposal Deadline	Proposal Deadline**	Award Start
<b><u>Research Supplement to Promote Diversity in Science</u></b> Under the mentorship of <b>current AHA awardees</b> , this supports predoctoral and postdoctoral fellows from underrepresented racial and ethnic groups in science.		Wednesday, Feb. 1, 2023	April 1, 2023
<b><u>Transformational Project Award</u></b> <b>Highly innovative, high-impact projects</b> that build on work in progress that could lead to critical discoveries or major advancements to accelerate cardiovascular and/or cerebrovascular research. Research deemed innovative may be built around an emerging paradigm, approaching an existing problem from a new perspective, or exhibit other uniquely creative qualities.		Thursday, Feb. 16, 2023	July 1, 2023
<b><u>AHA's Second Century Implementation Science Award</u></b> For early and mid-career investigators proposing innovative <b>implementation science</b> studies that align with AHA's mission and provide optimal approaches to improving public health.		Wednesday, March 1, 2023	July 1, 2023
<b><u>AHA's Second Century Early Faculty Independence Award</u></b> For highly-promising investigators in the early years of their first professional appointment as they address areas of critical, emerging priority for the next century.	Tuesday, April 4, 2023	Tuesday, May 9, 2023	July 1, 2023

# FOUNDATIONAL RESEARCH FUNDING

PROFESSIONAL.HEART.ORG/FUNDINGOPPORTUNITIES

In a typical year, the AHA offers research funding largely based on career stage:

- Predoctoral Fellowship
- Postdoctoral Fellowship
- Institutional Award for Undergraduate Student Training
- AHA Institutional Research Enhancement Award
- Career Development Award
- Collaborative Sciences Award
- Innovative Project Award
- Transformational Project Award
- Merit Award



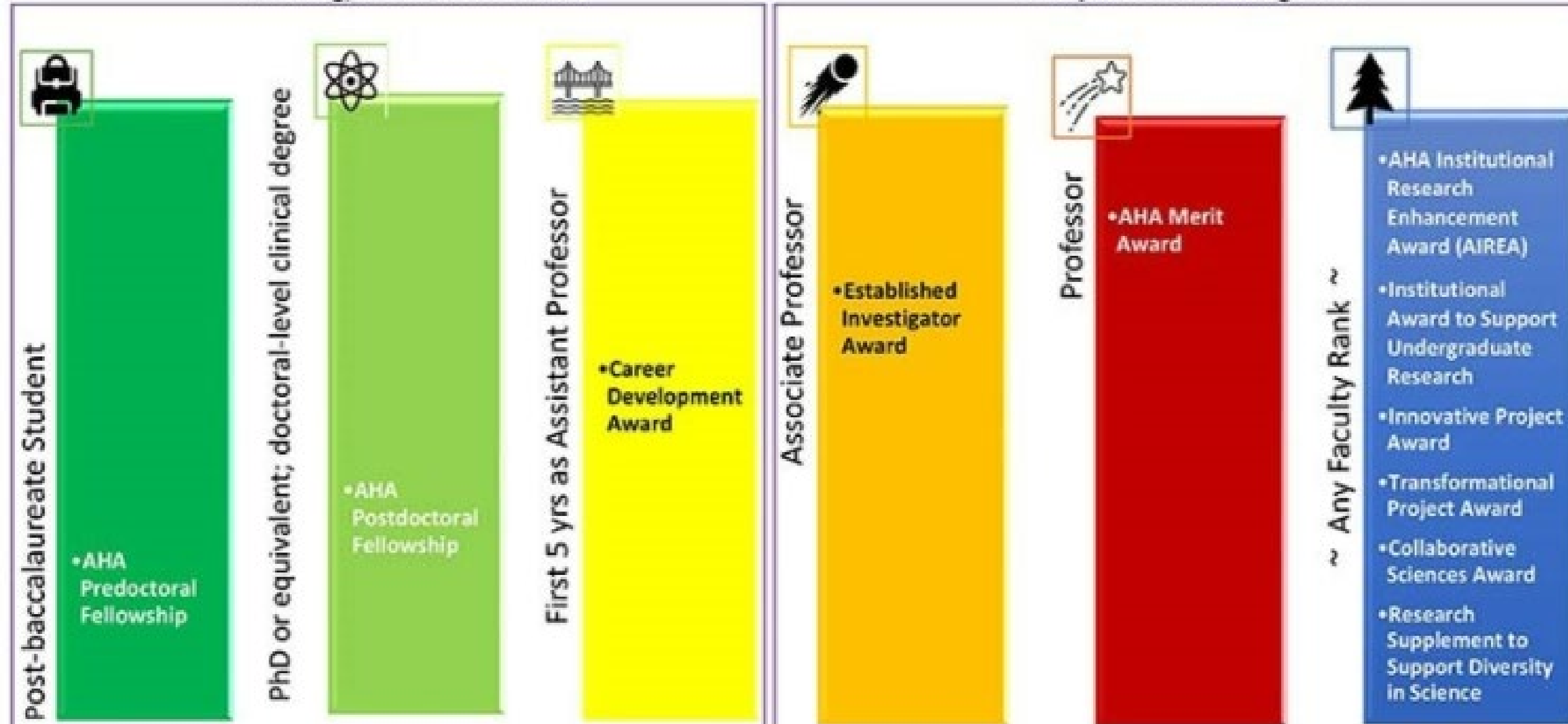
[This Photo](#) by Unknown Author is licensed under [CC BY-SA-NC](#)



# Career Levels Required for AHA Foundational Programs

## Training/Mentored Grants

## Independent Investigators





American  
Heart  
Association®

# FEATURES OF ALL AHA AWARDS

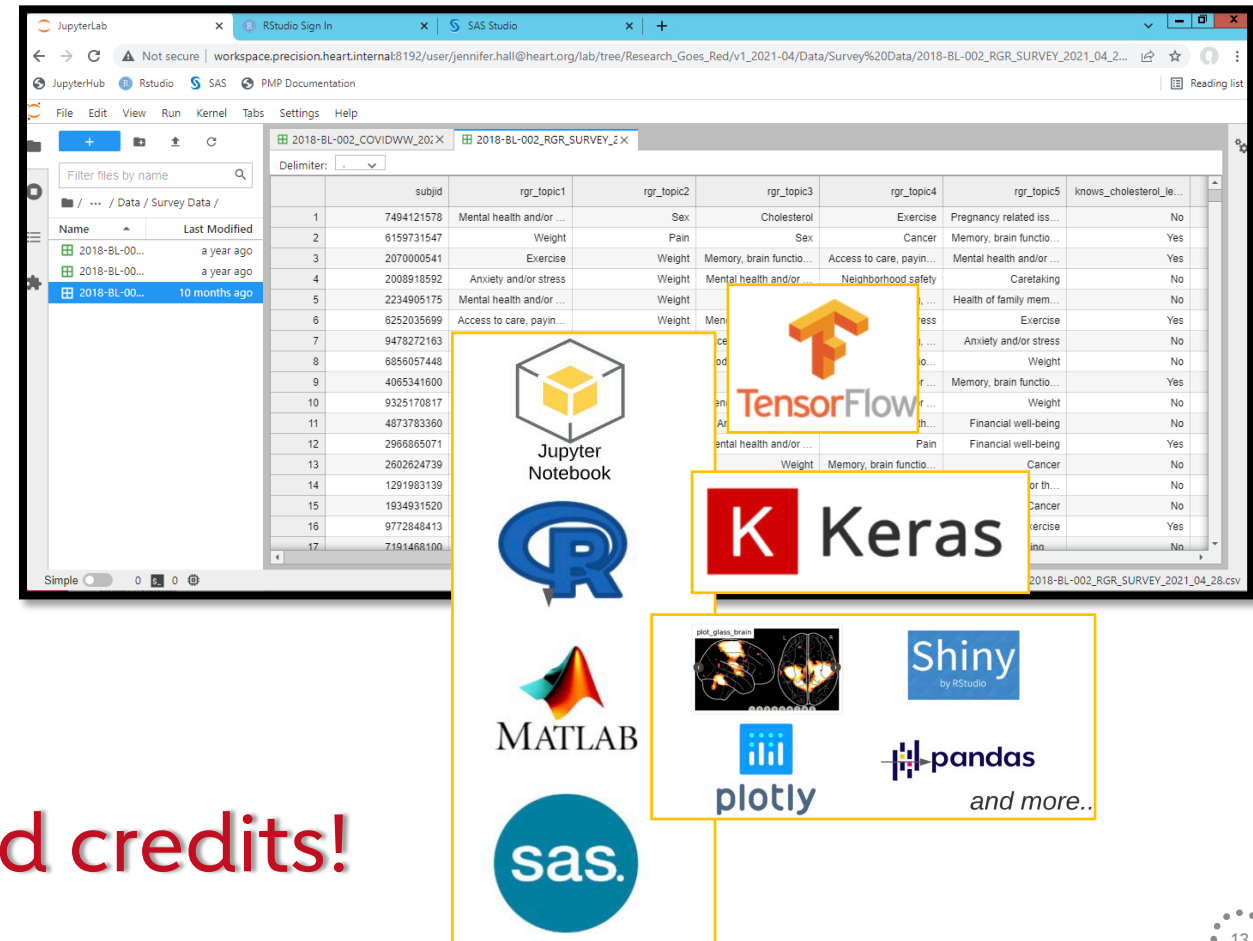


- ✓ All academic and health professionals
- ✓ Clinical, translational, population, behavioral, basic science
- ✓ Women, underrepresented groups in research, non-traditional career trajectories encouraged
- ✓ Most require no minimum percent effort
- ✓ Fully transferrable
- ✓ Straightforward re-budgeting

<https://professional.heart.org/en/research-programs/application-information>

# AHA Precision Medicine Platform

- Highly secure cloud computing (AWS) workspaces equipped with analytical tools for research
- Teams can easily collaborate; view the same data and code
- Register for an account and workspace at [precision.heart.org](https://precision.heart.org) and include your Award ID
- Please contact us with any questions – [pmp@heart.org](mailto:pmp@heart.org)



The screenshot displays a JupyterLab interface with a file browser on the left showing a directory structure under 'Data / Survey Data'. The main pane shows a data table with columns for subject ID, various topics (rgr\_topic1 to rgr\_topic5), and a 'knows\_cholesterol' column. Below the table, a collection of logos for supported analytical tools is shown, including Jupyter Notebook, R, MATLAB, SAS, TensorFlow, Keras, Shiny, plotly, and pandas, along with the text 'and more..'. The interface also shows a 'Reading list' on the right and a 'Simple' view toggle at the bottom left.

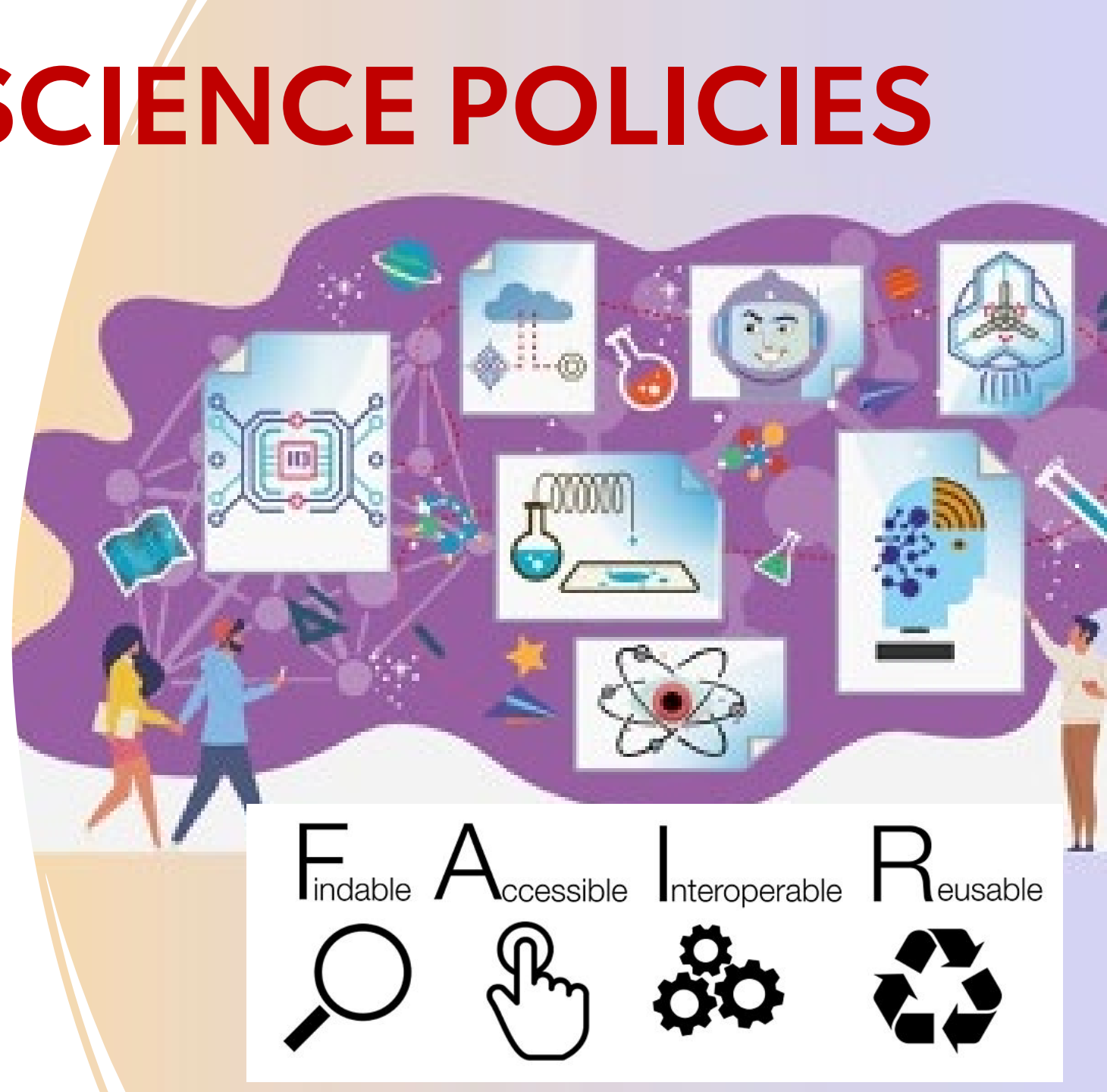
	subjid	rgr_topic1	rgr_topic2	rgr_topic3	rgr_topic4	rgr_topic5	knows_cholesterol_je...
1	7494121578	Mental health and/or ...	Sex	Cholesterol	Exercise	Pregnancy related iss...	No
2	6159731547	Weight	Pain	Sex	Cancer	Memory, brain functio...	Yes
3	2070000541	Exercise	Weight	Memory, brain functio...	Access to care, payin...	Mental health and/or ...	Yes
4	2008918592	Anxiety and/or stress	Weight	Mental health and/or	Neighborhood safety	Caretaking	No
5	2234905175	Mental health and/or ...	Weight			Health of family mem...	No
6	6252035699	Access to care, payin...	Weight	Men...		Exercise	Yes
7	9478272103					Anxiety and/or stress	No
8	6856057448					Weight	No
9	4065341600					Memory, brain functio...	Yes
10	9325170817					Weight	No
11	4873783360					Financial well-being	No
12	2966895071					Pain	Yes
13	2602624739					Cancer	No
14	1291983139					or th...	No
15	1934931520					Cancer	No
16	9772848413					ercise	Yes
17	7191468100					no...	No

**Awardees are eligible for cloud credits!**



# AHA OPEN SCIENCE POLICIES

Increase discoverability  
and encourage  
broadest possible  
audience to access  
and build upon  
research results



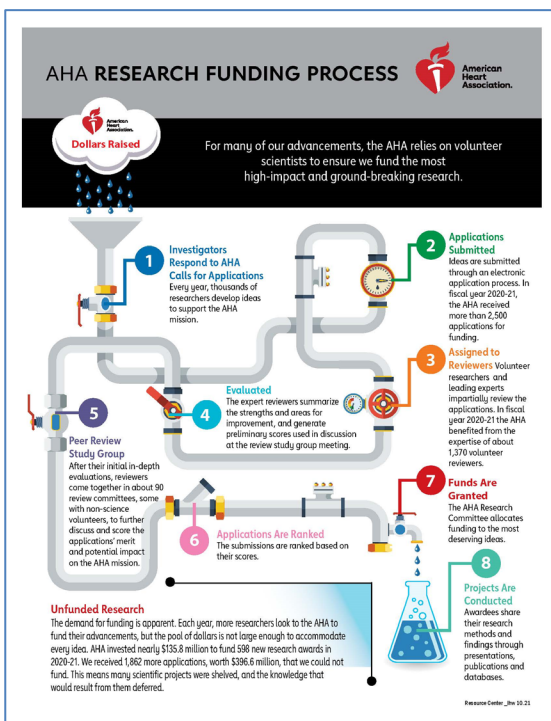
# IMPROVE YOUR CHANCE OF FUNDING



# Application Resources

<https://professional.heart.org/en/research-programs/application-information#resources>

Internal & external tools: Fact sheets, articles, videos, online tools



- AHA Research Application & Award Process
- Step-by-step application instructions
- Lay summary
- Career development plan
- Biosketch
- Writing a proposal
- Peer Review & scoring







American  
Heart  
Association®

# APPLICATION TIPS



- ✓ Some require pre-proposal (LOI)
- ✓ Follow the instructions on ProposalCentral screens & AHA Application Instructions document
- ✓ [Apply@Heart.org](mailto:Apply@Heart.org)

# SUMMARY FOR NON-SCIENTISTS (LAY SUMMARY)



Describe your work to be understood by people who do not have science or medical backgrounds.

How to Share Your AHA-Funded Research  
by researcher Georgia Papavasiliou, Ph.D.

[https://www.youtube.com/watch?v=04ZEyFM1T2s&list=PLtzTeR\\_CJNHJBtkiHnTJ-uhYq3WGDYkP5&index=1](https://www.youtube.com/watch?v=04ZEyFM1T2s&list=PLtzTeR_CJNHJBtkiHnTJ-uhYq3WGDYkP5&index=1)





American  
Heart  
Association®

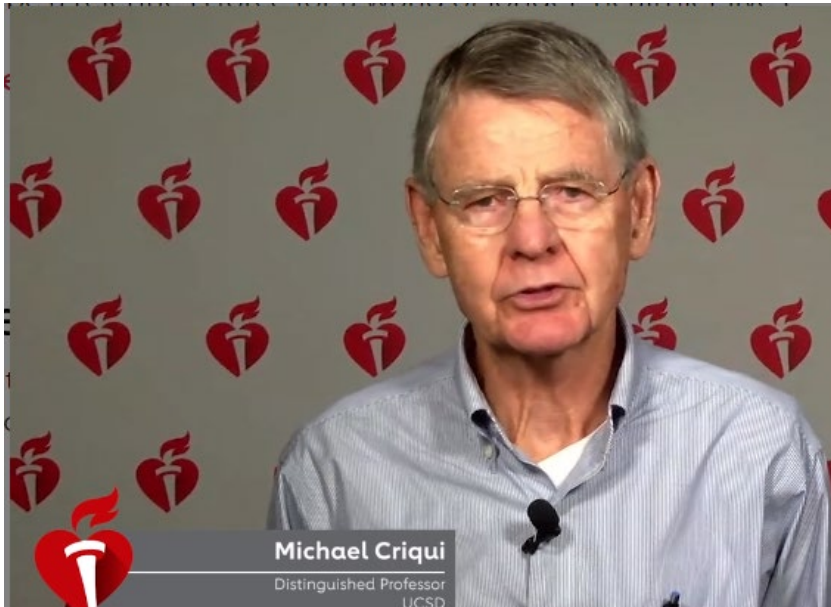
# APPLICATION TIPS

- ✓ Applicant must be AHA Professional Member Join early!!  
<https://professional.heart.org/en/professional-membership/become-a-member>
- ✓ Application software is Proposal Central – opens about 60 days prior to deadline
- ✓ Work on your uploads in advance  
<https://professional.heart.org/en/research-programs/application-information/required-application-documents>



# BECOME A PEER REVIEWER

[professional.heart.org/PeerReview](https://professional.heart.org/PeerReview)



*"You learn how to tailor your own grants to avoid the pitfalls you see in other people's grants." – Dr. Michael Criqui*

- Study sections by award type & topic
- Virtual meeting via Zoom & ProposalCentral
- Submit your CV to [PeerReview@heart.org](mailto:PeerReview@heart.org)
- Reviewer-in-Training program for AHA Postdoctoral Fellows

# professional.heart.org/PeerReview



ex: Heart Attack 🔍 | Login ▾

Communities ▾ Guidelines & Statements ▾ Journals Meetings ▾ Education ▾ Members / Councils ▾ Research Programs ▾

Become a Member

Home / Research Programs / Peer Review

## Peer Review

The AHA continually enhances and refines its peer review process to identify and fund the most meritorious research projects that support our mission:

*To be a relentless force for a world of longer, healthier lives.*

### Unconscious Bias Training for Reviewers

- Unconscious bias training for all AHA peer reviewers is strongly encouraged but not required.
- A peer reviewer who has completed \*any\* form of unconscious bias training in the



Applicants should never contact reviewers regarding applications. Discussing the scientific content of an application or attempting to influence the review outcome will constitute a conflict of interest in the review. Reviewers must notify the AHA if an applicant contacts them.

### Contact Us

For assistance with peer review-related questions, please [email us at Peer Review](#) or call 214-360-6108.

### Register to Become an AHA Research Peer Reviewer

Create a ProposalCentral reviewer account to join our study section community in [three easy steps \(PDF\)](#).



# WEBINARS

Special sessions for most programs

Listed on Application Information page

All are invited

Get answers to your questions!

Next general session like this one:

- AHA Research award offerings
- Application tips
- Review process
- Q & A session

**Wednesday, April 5, 2023 - 10 am CT**



# Questions/Inquiries

## AHA Applications Team

Call 214.360.6107 (option 1)

E-mail [apply@heart.org](mailto:apply@heart.org)

